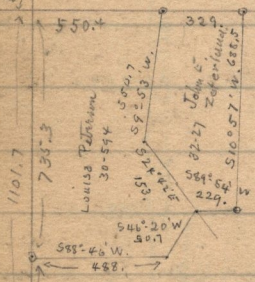
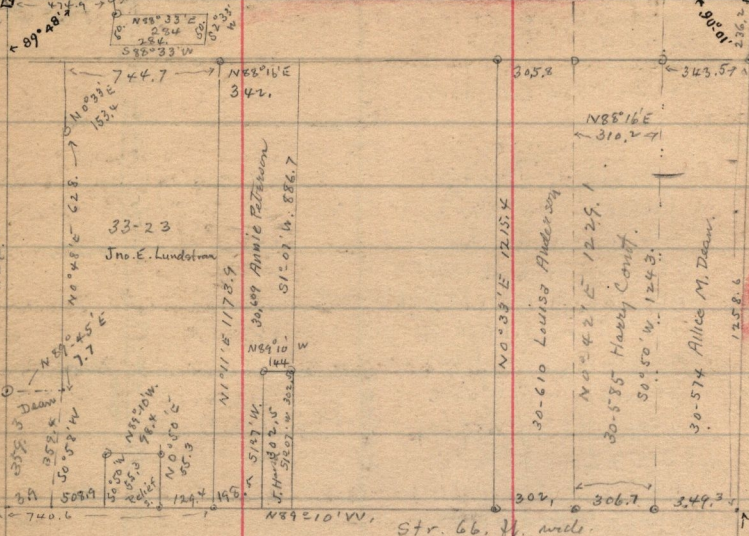


Sec-D-19  
P-81-148-149  
G-41  
I-48-49  
C-191  
F-81-82-83-84-166

S6°22'E  
26.3

S89°26'E 2648.2  
N88°16'E 310.2

N0°22'E 2651.2 ft Total



Str. 66 ft. wide.

A 209+51.3 } mean  
B 133+58.62 }  
Calculated  
from S. & W.  
(8)

Sec. line  
S89°35'E 2639.73 (calculated) -  
from west. (J)  
S.E. 1/4 Sec. 16 - T.6-N-R. 14 W  
B 159+9

A 183+08.68 }  
B 133+08.52 }  
11.4

Oct 5-1916  
true  
of Sec line  
2626.4  
S. line N.E. 1/4 Sec. 21  
N88°36'-12"E

correct 1/46r A {  
B {  
184+16.98 }  
159+92.67 }

N0°31'E 39.55  
A 183+77.4  
B 159+92.98  
2559.67  
N1°05'28"E